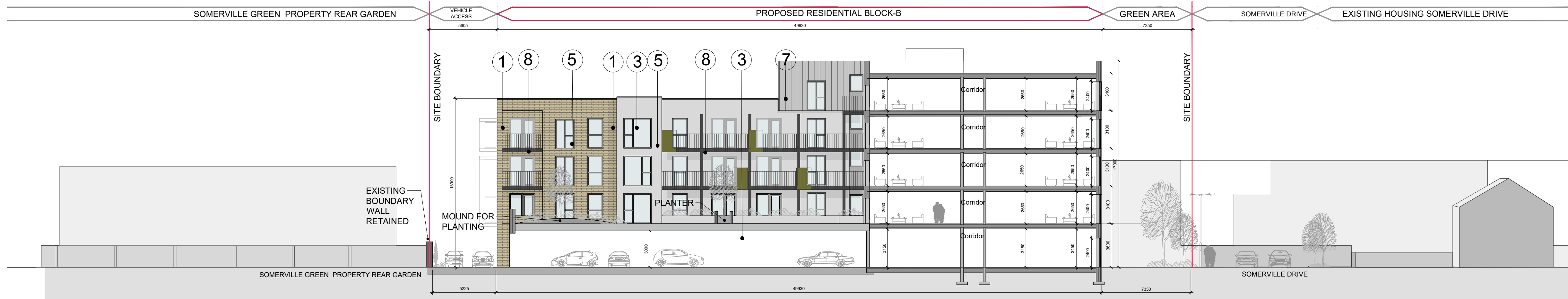
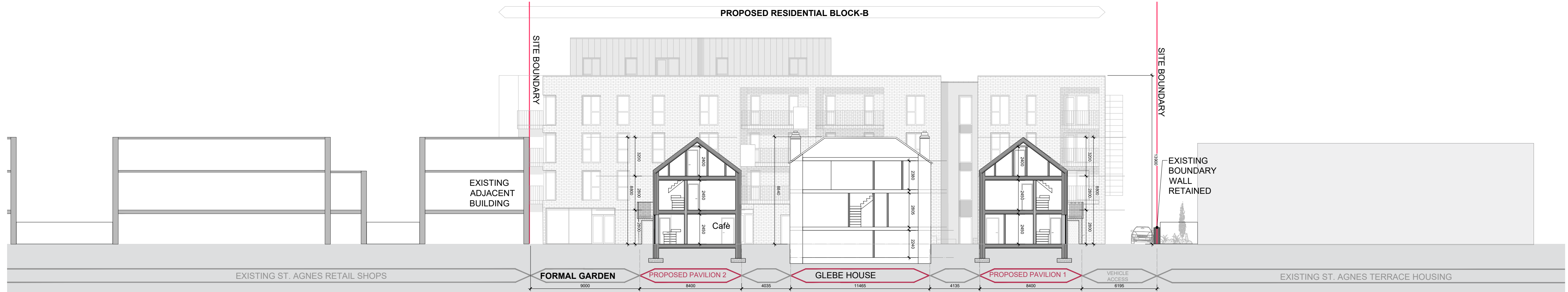


SECTION C-C
Scale 1:200



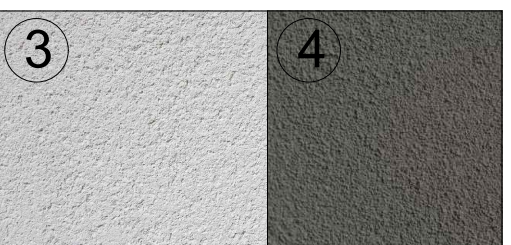
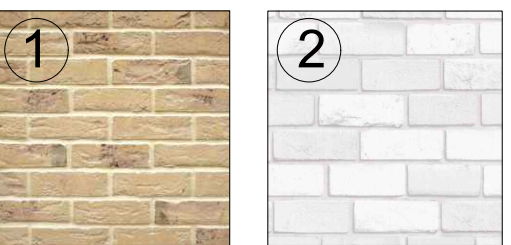
SECTION D-D
Scale 1:200



SECTION E-E
Scale 1:200

External Finishes

- 1 Light buff brick with recessed mortar.
- 2 White brick with recessed mortar.
- 3 Light grey nap render finish.
- 4 Dark grey nap render finish.
- 5 PPC aluminium window system.
- 6 PPC aluminium curtain wall system.
- 7 Polyester Powder Coating aluminium cladding.
- 8 Painted steel balcony system.
- 9 Painted steel colour panel fixed to balcony system.
- 10 Natural slate roof to conservation architect specifications



DO NOT SCALE FROM THIS DRAWING. USE FIGURED DIMENSIONS IN ALL CASES. VERIFY DIMENSIONS ON SITE AND REPORT ANY DISCREPANCIES TO THE ARCHITECTS IMMEDIATELY. THIS DRAWING TO BE READ IN CONJUNCTION WITH THE ARCHITECTS SPECIFICATION. © THIS DRAWING IS COPYRIGHT AND MAY ONLY BE REPRODUCED WITH THE ARCHITECTS PERMISSION.

P01	Oct 2021	AN	PLANNING ISSUE
REV	DTE	DRN	ISSUE



Reddy Architecture + Urbanism
Dublin Office
Dartry Mills, Dartry Road, Dublin 6.
T: +353 (0)1 4987000
W: www.reddyarchitecture.com
E: info@reddyarchitecture.com

3.0 PLANNING

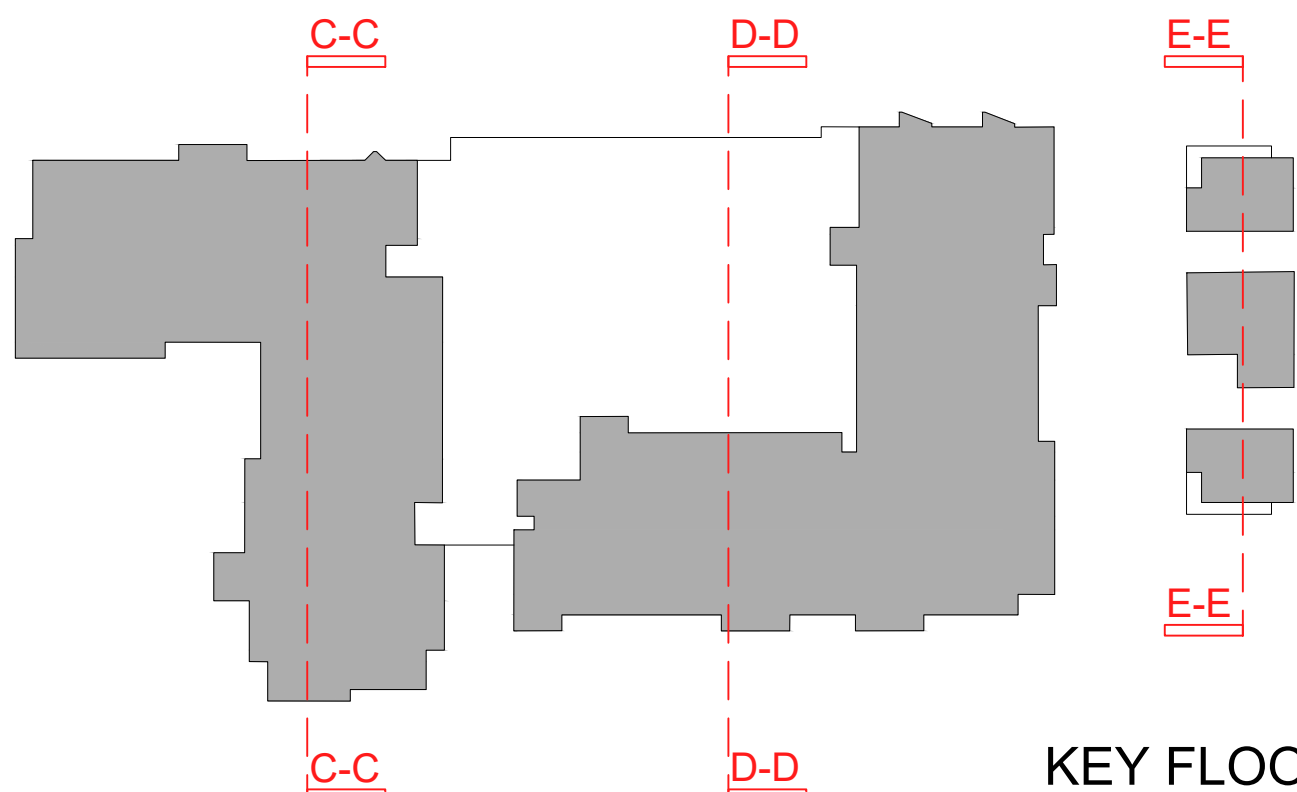
JOB
Glebe House Residential Development,
St Agnes Road, Crumlin, Dublin

CLIENT
Seabren Developments Ltd and
Circle VHA CLG

DRAWING
SECTIONS - SHEET 02

DATE	October 2021	SCALE	1:200 @ A1
DRN.	M. Smyth	CHECKED	M. Freaney

JOB NO.	DWG NO.	REVISION
P19171D	302	P01



KEY FLOOR PLAN