

The diagram illustrates the cross-section of a vegetated roof, showing the following layers from top to bottom:

- Vegetation:** The top layer, which can be installed via plug planting, seeding, or selected species for specific project goals.
- Baudec Extensive Substrate:** A lightweight growing medium designed to meet FLL guidelines.
- Baudec Filter Fleece:** A filtration layer that prevents substrate particles from clogging the drainage system.
- DSE 40:** A lightweight water storage and drainage layer made of HDPE, 40mm thick.
- Baudec FPM500 Protection Mat:** A mat made of polyester and polypropylene fibers.
- Baudec PE Foil Separation Layer:** A separation and slip layer made from recycled granules.

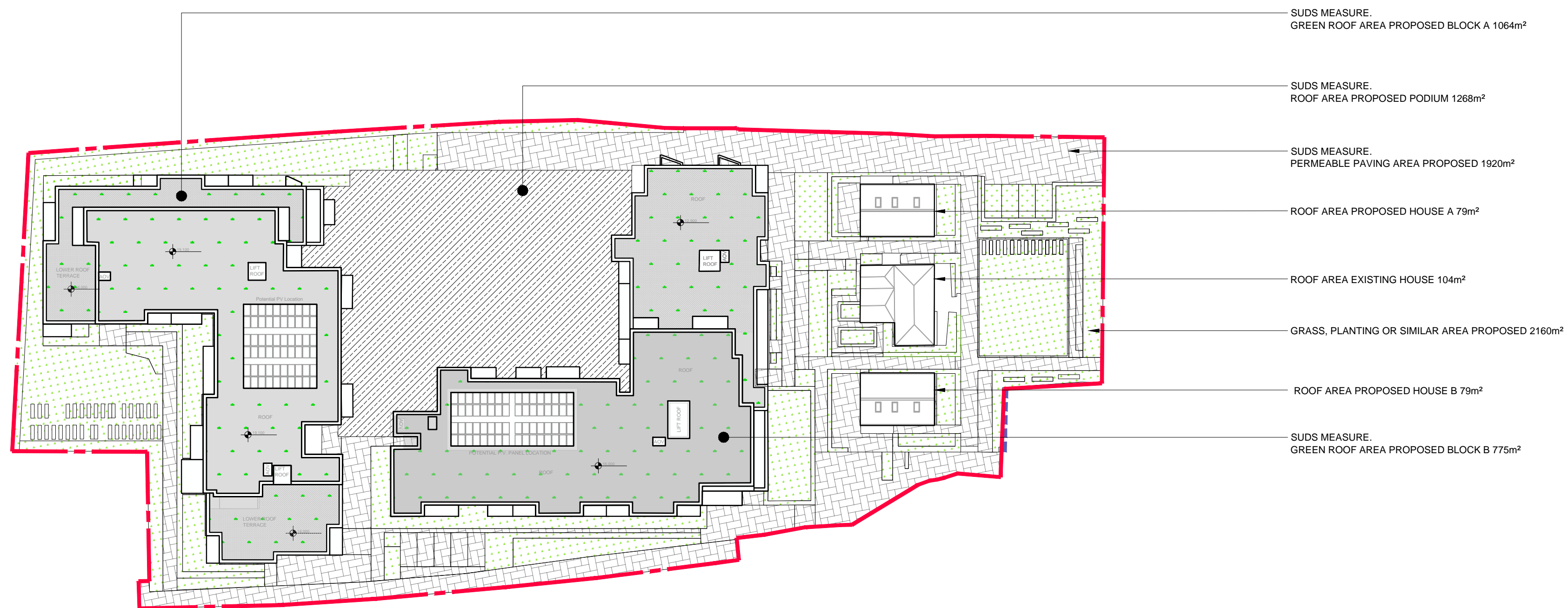
This image shows two components used in permeable pavement systems. On the left, a close-up of a yellow plastic permeable spacer, which is a cross-shaped block with four circular holes. On the right, a photograph of a completed permeable pavement surface made of interlocking porous paving blocks in various shades of red and brown.

80mm PERMEABLE PAVERS (BY TOBERMORE OR SIM.)  
ON 50mm THICK COMPACTED SAND BED ON  
250mm OF 20mm COARSE AGGREGATE ON  
200 CL 804 WELL CONSOLIDATED HARDCORE FILL IN ACCORDANCE WITH S.R. 21 ANNEX E ON  
TERRAM GEOTEXTILE MEMBRANE

TYPICAL SECTION OF PERMEABLE PAVED AREA  
SCALE - N.T.S.

SELECTED PERMEABLE PAVERS ON  
2-drawn CLEAN SINGLE SIZED CRUSHED AGGREGATE  
ON 150mm OF 20mm COARSE GRADED AGGREGATE  
ON TERRAM GEOTEXTILE LAYER


 TYPICAL SECTION OF PERMEABLE PAVED AREA  
 SCALE - N.T.S.

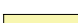








PROPOSED SITE AREA TYPES  
SCALE 1:500

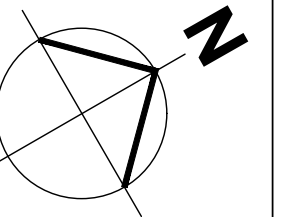


**SITE BOUNDARY**

**LEGEND:**

	EXISTING PERMEABLE AREA
	EXISTING IMPERMEABLE AREA
	FINISH TYPE 1: PERMEABLE PAVERS
	FINISH TYPE 2: GRASS, PLANTING OR SIMILAR
	FINISH TYPE 3: GREEN ROOF
	FINISH TYPE 4: FLAT ROOF
	PODIUM SURFACE

<b>SURFACE AREAS</b>	<b>m<sup>2</sup></b>
EXISTING SITE	8749
BLOCK A ROOF	1486
BLOCK B ROOF	1637
PODIUM	756
HOUSES	160
GLEBE HOUSE	105
PERMEABLE PAVING	1728
PLANTED	2877



Drawing Stage:      <b>PLANNING</b>	Project Details:		Notes										Drawn by: BD		Checked by: AG		Approved by: JP		Date: 01/07/2020		<div><div><div>CORA</div><div>CONSULTING ENGINEERS</div></div><div>Behan House, 10 Lower Mount Street, Dublin 2. D02 HT71 Tel: +353 1 661 1100 e-mail: info@cora.ie Web: www.cora.ie</div></div>						
	Site Address:												GLEBE HOUSE, St. AGNES ROAD, CRUMLIN, DUBLIN 12		Project Name:				Scale: A/S @ A1							Project Number: 1968	
	Client:												SEABREN DEVELOPMENTS LTD & CIRCLE VHA		Drawing Title: PROPOSED ROOF FINISHES GENERAL ARRANGEMENT				Project:							Originator:	
	Architect:												REDDY ARCHITECTURE & URBANISM						-		CORA		-				
	M&E Designer:												-						-		-		-				
	Contractor:												-		-		-		-		-		-				